

## SPECIFICATIONS

### GNSS Features

Channels.....	1698
GPS.....	L1C, L1C/A, L2C, L2P(Y), L5
GLONASS.....	G1, G2, G3
BDS.....	B1I, B2I, B3I, B1C, B2a, B2b
GALILEOS.....	E1, E5a, E5b, E6, AltBOC*
SBAS.....	L1*
IRNSS.....	L5*
QZSS.....	L1, L2C, L5*
MSS L-Band.....	GalileoHAS & BDSPPP
Positioning Output Rate.....	1Hz~20Hz
Initialization Time.....	< 10s
Initialization Reliability.....	> 99.99%

### Positioning Precision

Code differential GNSS positioning.....	Horizontal: 0.25 m + 1 ppm RMS Vertical: 0.50 m + 1 ppm RMS
GNSS Static.....	Horizontal: 2.5 mm + 0.5 ppm RMS Vertical: 3.5 mm + 0.5 ppm RMS
Static (Long Observation).....	Horizontal: 2.5 mm + 0.1 ppm RMS Vertical: 3 mm + 0.4 ppm RMS
Rapid Static.....	Horizontal: 2.5 mm + 0.5 ppm RMS Vertical: 5 mm + 0.5 ppm RMS
PPK.....	Horizontal: 3 mm + 1 ppm RMS Vertical: 5 mm + 1 ppm RMS
RTK(UHF).....	Horizontal: 8 mm + 1 ppm RMS Vertical: 15 mm + 1 ppm RMS
RTK(NTRIP).....	Horizontal: 8 mm + 0.5 ppm RMS Vertical: 15 mm + 0.5 ppm RMS
SBAS Positioning.....	Typically<5m 3DRMS
RTK Initialization Time.....	2~8s
IMU Accuracy.....	8mm+0.7 mm/°tilt
IMU Tilt Angle.....	Optimal accuracy within 60°

### Hardware Performance

Dimension.....	105mm(φ)×58mm(H)
Weight.....	540g (battery included)
Material.....	Magnesium aluminum alloy shell
Operating Temperature.....	-45°C~+75°C
Storage Temperature.....	-55°C~+85°C
Humidity.....	100% Non-condensing
Waterproof/Dustproof.....	IP68 standard
Shock/Vibration.....	Withstand 2 meters pole drop onto the cement ground naturally
Power Supply.....	6-28V DC, overvoltage protection
Battery.....	Inbuilt 7.4v 5000mAh rechargeable Lithium-ion battery
Battery Life.....	25h (static) 25h (rover mode, optimal condition)

### Communications

I/O Port.....	Type-C interface (charge+OTG+Ethernet) UHF antenna interface
Internal UHF.....	Radio Receiving
Frequency Range.....	410-470MHz
Communication Protocol.....	Farlink, Trintalk, SOUTH, CHC, Hi-target, Satel

Communication Range.....	Typically 8-10km with Farlink protocol, (12-15km in optimal condition)
Bluetooth.....	Bluetooth 5.0, Bluetooth 3.0/4.2 standard, Bluetooth 2.1 + EDR
NFC Communication.....	Support
Wifi.....	802.11 b/g/n standard

### Data Storage/Transmission

Storage.....	16GB SSD internal storage Support automatic cycling storage Support external USB storage (OTG) The customizable sample interval is up to 20Hz
Data Transmission.....	Plug and play mode of USB data transmission Supports FTP/HTTP data download
Data Format.....	Static data format: STH, Rinex2.01, Rinex3.02, etc. Differential data format: RTCM 2.1, RTCM 2.3, RTCM 3.0, RTCM 3.1, RTCM 3.2 GPS output data format: NMEA 0183, PJK plane coordinate, Binary code Support: VRS, FKP, MAC, fully support NTRIP protocol

### Sensors

IMU.....	Built-in IMU, calibration-free, 60 Degrees
Camera.....	Front Camera: 8MP, for Video Shooting & Visual takeout Bottom Camera: 2MP, for Visual Stakeout
Electronic Bubble.....	Controller software can display electronic bubble, checking leveling status of the carbon pole in real-time
Thermometer.....	Built-in thermometer sensor, intelligent temperature control technology, monitoring and adjusting the receiver temperature

### User Interaction

Operating System.....	Linux
Buttons.....	Single button
Indicators.....	4, for showing Power, data, bluetooth, satellites
Web Interaction.....	With access to Web UI via WiFi or USB connection, users can monitor the receiver status and change the configurations
Voice Guidance.....	Chinese/English/Korean/Spanish/Arabic/Portuguese/Russian/Turkish/French/Italian/
Secondary Development.....	Provides secondary development package, and opens the OpenSIC observation data format and interaction interface definition
Cloud Service.....	The powerful cloud platform provides online services like remote management, firmware updates, online registers, etc.

\*Reserve for future upgrade.

**Remarks:** Measurement accuracy and operation range might vary due to atmospheric conditions, signal multipath, obstructions, observation time, temperature, signal geometry and number of tracked satellites. Specifications subject to change without prior notice

# K6X

## Palm-sized RTK with DualCamera

- ✓ **All Constellations Tracking**  
1698 Channels
- ✓ **The 5th Gen. IMU**  
All-time Available
- ✓ **FarLink 2.0 Radio**  
Base Lock + Move Prompt
- ✓ **Dual Engine Algorithm**  
Enhanced Positioning Capability
- ✓ **Compact Design**  
0.54kg, 10.5cm \* 5.8cm
- ✓ **Extended Endurance**  
Up to 20 Hours RTK work
- ✓ **HAS & PPP**  
Precise Single Pt. Positioning
- ✓ **Video Shoot & 3D Modeling**  
Upgradeable Function



**Dual Camera + AR + New IMU,  
More Intelligence, Higher Efficiency!**



**Stakeout Intuitively with  
Live-view Video Display**

This new feature combines real-time image display with RTK positioning. K6X captures real-time video through its built-in camera, and users can directly see the points to be setout on the collector screen, which is accurate and intuitive.



**Guide-line Powered by AR**

AR technology superimposes a virtual guide-line and distance numbers on the real-time video display. Users do not need to recognize the directions themselves, they only need to follow the guide-line to find the point to be setout, which saves time and effort.



**Simpler and Easier-to-Use  
Inertial Tilt Measurement**

In the past, surveyors would rotate the pole when changing the direction of travel or adjusting the attitude of the receiver, sometimes it disables IMU.

Now the 5th generation IMU eliminates the loss of IMU Status in most scenarios to improve the availability and productivity of IMU. The calibrate-free feature save the time of manually initializing IMU each time.



**1698 Channels, Capture  
Satellites As Many As Possible**

K6X with 1698 channels can track more satellites at the same time and capture weak signals under canopies hence better success rate and speed of obtaining a fixed solution.

It is possible to get fixed in a few seconds where previously under the dense forest or surrounded by buildings cannot.



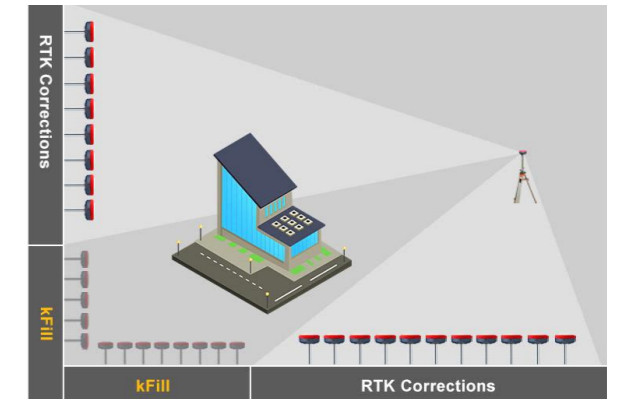
**Galileo HAS and BDS PPP**

By receiving corrections delivered directly from L-band satellites, K6X allows you to achieve 10 to 20 centimeter-level accuracy with only one rover on hand when base receiver or CORS service is not accessible in remote areas. (this function requires registration code, please apply from your dealers)

**“kFill” Save  
RTK/ CORS Signal Loss**

KOLIDA kFill technology is able to provide a 5 minutes sustainable high accuracy service during temporary RTK or CORS signal coverage outages.

After RTK and CORS signal recovers, receiver will switch to real-time corrections seamlessly.



**Ultra Light,  
Comfortable Experience**

K6X is an ultra light GNSS receiver that leaves the competition behind. Its total weight is only 0.54 kg including battery, 40% even 50% lighter than a traditional GNSS receiver. The light-weight design reduces surveyor's fatigue, increase their mobility, is especially helpful to work in challenging environment.

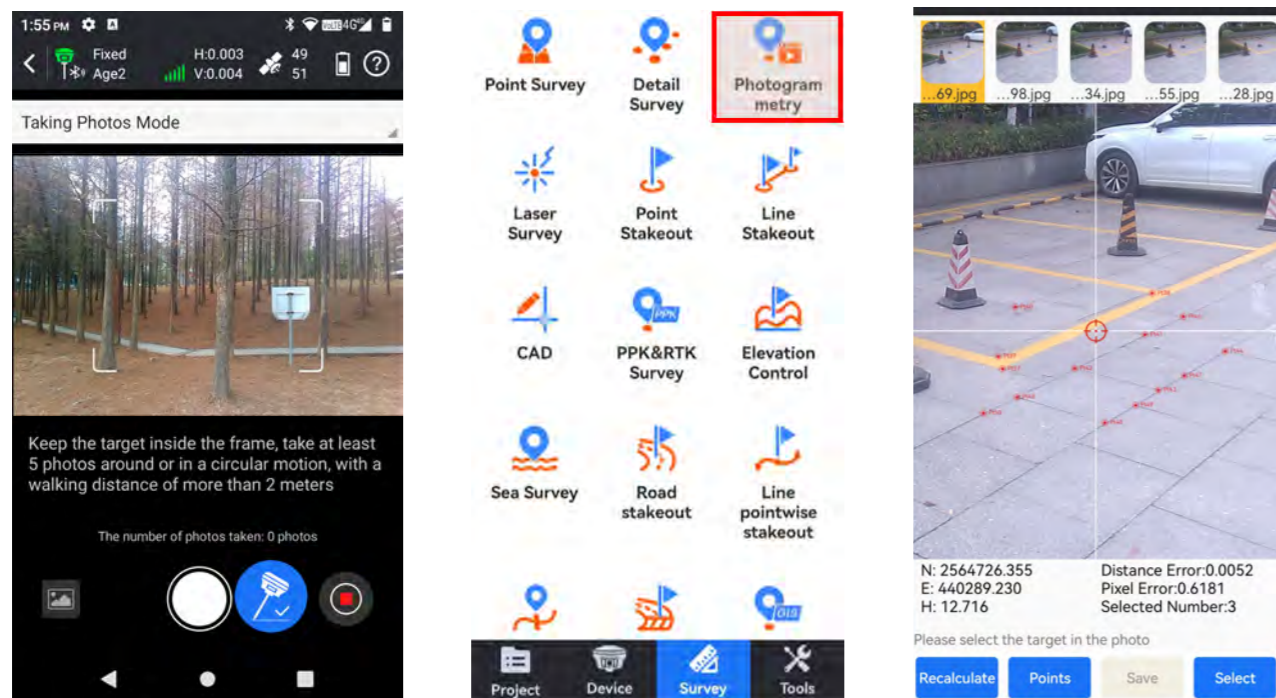
**Smaller  
but More Durable**

Thanks to the high-capacity battery and the intelligent power management plan, K6X can work up to 15-25 hours in RTK rover mode, up to 25 hours in static mode. The charging port is Type-C USB, users can choose KOLIDA quick charger or their own smartphone charger to recharge. Power bank also can be used as an external power supply.



# Photogrammetry Measurement in Real Time — Working Easily by Video Shooting

K6X can process a set of photos or a video, acquiring coordinates for hundreds of points within minutes. It boasts a wider working range and fewer blind spots through remote measurements with the camera. Locations that were once challenging, such as spaces under rooftops and areas with obstacles, are now easily measurable. *(this function is an optional upgradeable function, need to consult your local distributor)*



Utilizing visual positioning, surveyors can collect field data in a short time. The data can preserve safely in the device and is reusable at any time. These capabilities are particularly well-suited for distinctive GNSS measurement tasks, including documenting accident scenes and excavation sites for urban public facilities



Too Much Details to Measure



In Short of Time



Risky Terrain

## Designed for Urban Surveying

--Cloud Server Online Processing

Surveyors, with a strong internet connection in urban areas, can process image data online using network and cloud servers. K6X achieves 2cm accurate coordinate data for image measurements within minutes, balancing precision and speed.

## Designed for Field Surveying

--Data Controller Offline Processing

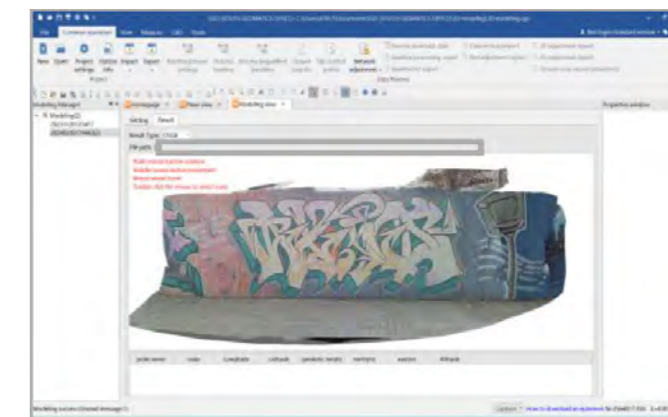
Without internet coverage, surveyors can perform offline image data processing using the data controller app. This mode offers the fastest processing speed, saving time on data uploads and delivering 2cm accuracy results within a few seconds.

# 3D Modeling & Post Processing — Eyes On Now, Be Prepared for Future

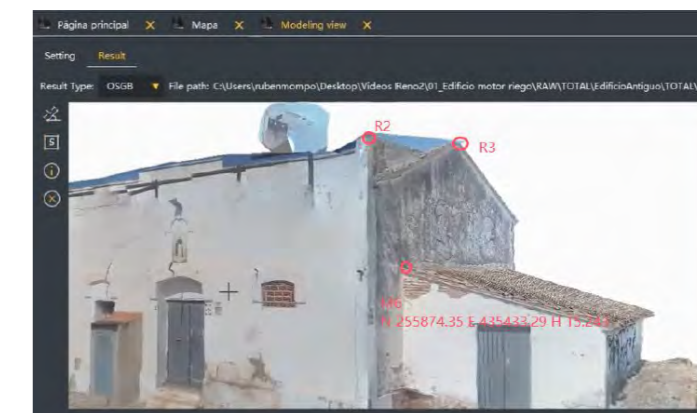
K6X enables single-user 3D modeling, on the models visually displaying geographic information like coordinates, areas, and volumes. It supports transforming model data into different formats and customize coordinate parameters for diverse applications. *(this function is an optional upgradeable function, need to consult your local distributor)*



Shooting a Video



Generating 3D Model



Measuring on 3D Model

## Work in Your Preferred Way



Surveyors can import K6X data into KOLIDA GEO Office (on PC) or third-party software for 3D modeling. Future updates to KSurvey (Android App) will also include 3D modeling functions, allowing users to select the most suitable software for optimal work efficiency based on scenario and task requirements.

## Ensuring a Smooth Journey

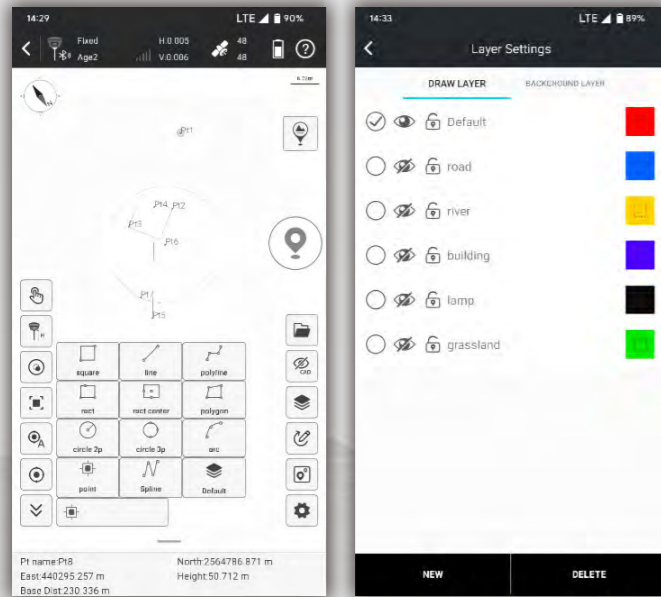


K6X harnesses KOLIDA's 3D modeling tech, seamlessly integrating image measurements with UAV data, including DJI and other brands. Overcoming data gaps in UAV surveys, K6X supplements incomplete models by collecting ground image data, improving overall survey outcomes.

# Ksurvey APP

## Field Data Collection & Mapping: The Most Advanced is Here

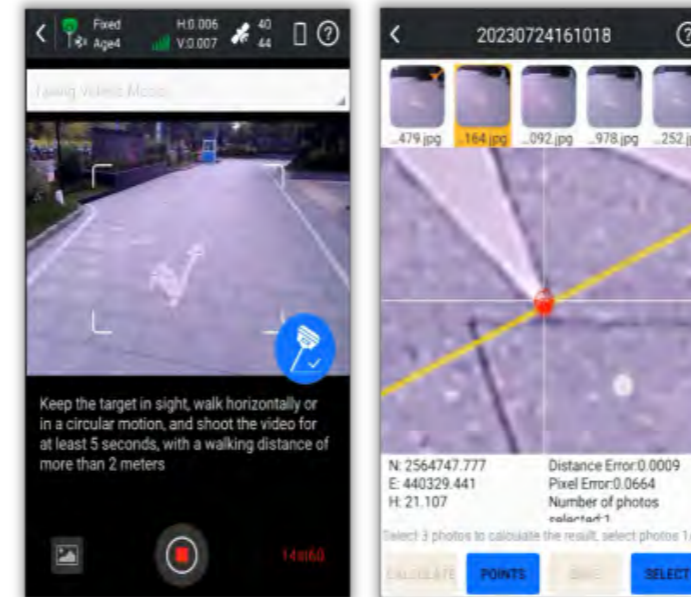
### Measure & Draw : Save Time in Field work and Office



This feature allows you to draw the result map while completing point measurements.

- Before measuring points, users can choose the shape of the target object to be measured from 11 preset figures. The software will guide you to measure points in an order and automatically connect lines and complete the drawing of the figure.
- The .dxf or .dwg maps created on-site can be used directly in office work.
- Users can assign measured objects with different attributes, to different layers for measurement and management, making no mistakes.

### Visual Positioning : Industry-Leading Non-Contact Measurement Technology

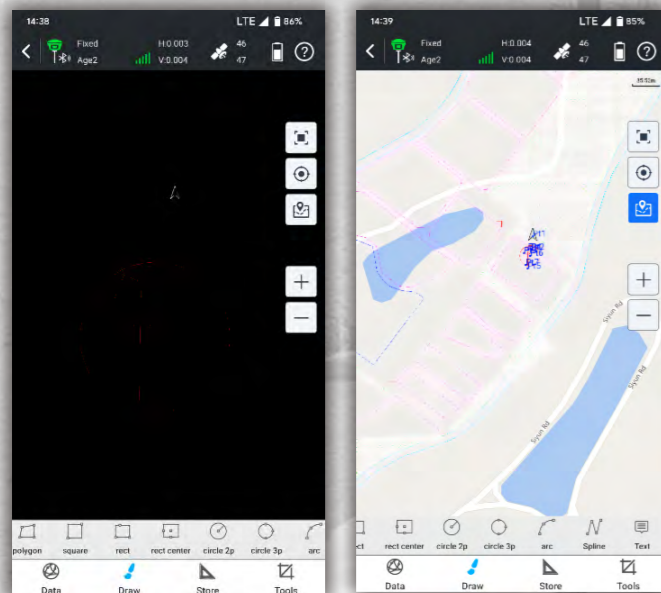


Photogrammetry Measurements can be conducted by taking pictures or videos. Coordinates of all points in the photos can be acquired.

- Now, target points that are inaccessible due to dangerous environments, poor satellite signals, or impassable terrain can be measured remotely.
- The captured image data can also be used with software like SGO, Pixel4D, DJI Terra, and CC for 3D modeling.
- Image measurement data can also be combined with drone measurement data to address issues of blurriness and deformation in ground data models collected by drones.

*(This function only works with the receiver models that have front-facing camera or dual-cameras)*

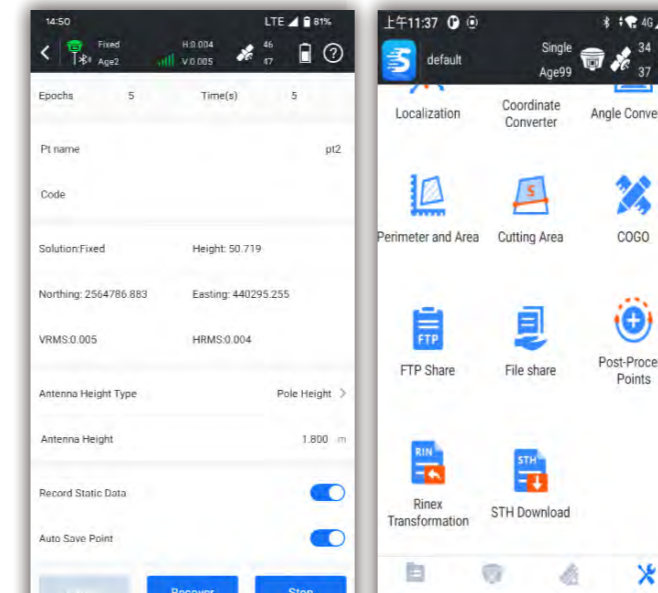
### CAD Draw : Drafting without a PC



Select points to form a polygon, and directly identify the area division points for the surveyor to stake out. There is no more need for the user to guess a position to measure, and then to adjust.

- CAD drawing does not require a computer.
- CAD files prepared on office PCs can be edited and managed by users on RTK data collection terminals.
- Drawing tools include up to 11 types of figures and one type of text.

### Static & PPK Measurement : More Assistance Now is Available



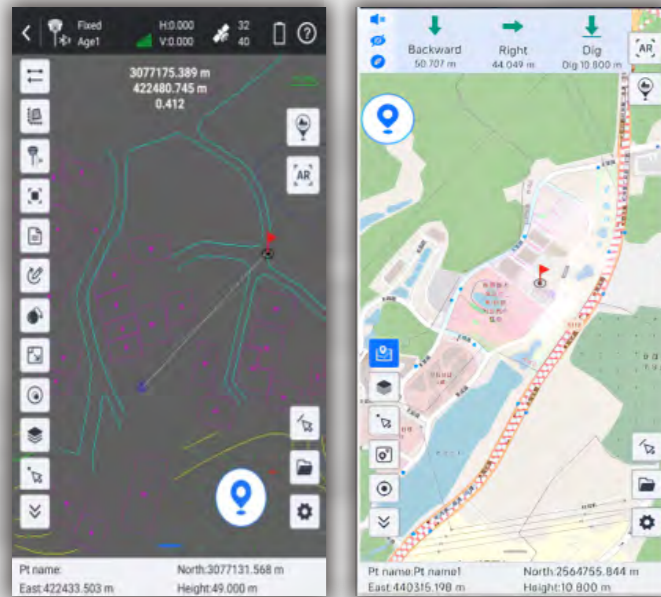
The software provides both static and PPK data collection capabilities.

- Data can be downloaded wirelessly, no need for a PC and cables.
- It is possible to convert .sth files into RINEX files right on the data collector or tablet or your phone, no need of PC.
- Data can be shared with others through mobile Internet.
- The accuracy of PPK data collection is as high as Trimble equipment, the result can be directly imported for use in TBC.

# Ksurvey APP

## Stakeout: Lighten Your Load, Increase Your Output

### CAD Stake-Out : Save Labor Cost and Reduce Errors



Traditional data collection software requires users to import points or lines to be setout from .csv or .txt files, users need to spend quite a lot of time to edit point and line libraries.

Moreover, for complex shapes such as curves, circles, and polygons, the traditional stake-out process is complicated. Now, our new CAD stake-out program offers a superior solution for surveyors.

- No need for manual editing of point libraries.
- Staking-out geometric shape is faster and easier.
- No need for obtaining coordinate files before work. Staking-out can be done with just a CAD drawing.
- Online maps and CAD drawings can be displayed simultaneously, improving accuracy.
- AR guide lines make staking-out more intuitive.

### Live-View Stake-Out : Faster, More Accurate, More Intelligent



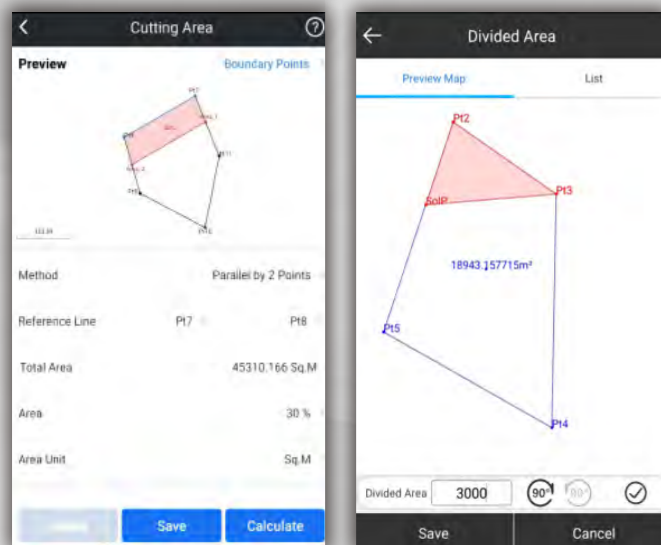
Users utilize the real-time imagery captured by the camera at the bottom of the receiver and the AR guide lines displayed by the software, to locate the target points.

- When users perform stake-out with a dual-camera GNSS receiver, the software can call upon both cameras to work together. At medium to long distances, the software uses the front-facing camera to indicate the direction of travel, and at close range, it uses the downward-facing camera to find the specific location. This further increases the speed of staking out.
- AR guide lines can be displayed in point staking out, line staking out, and CAD staking out programs.

*(This function only works with the receiver models that have downward-facing camera or dual-cameras)*

### Additional Features

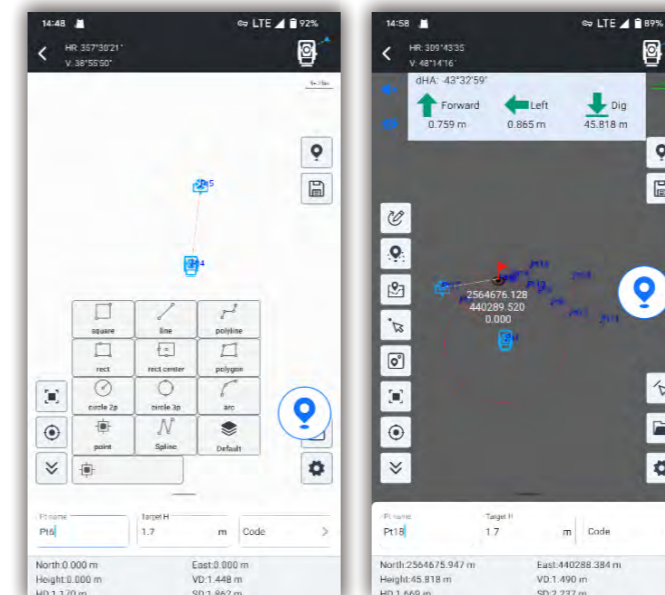
### Area Division : Developed for Professional Cadastral Survey and Stake Out



Select points to form a polygon, and directly identify the area division points for the surveyor to stake out. There is no more need for the user to guess a position to measure, and then to adjust.

- Six methods of division to determine the area division points. The methods are flexible and suitable to different user needs.
- The graphic display is intuitive and understandable.

### Compatible with Multiple Devices



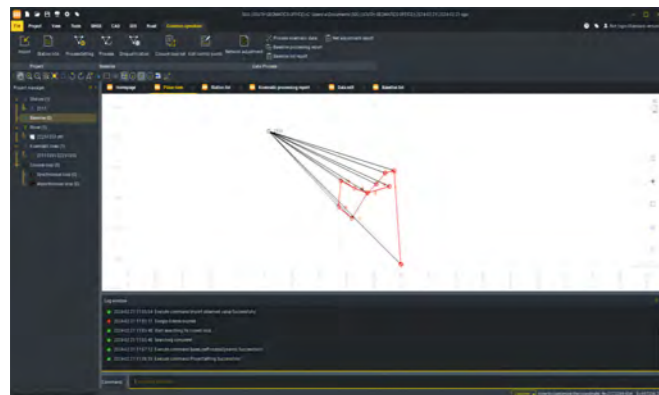
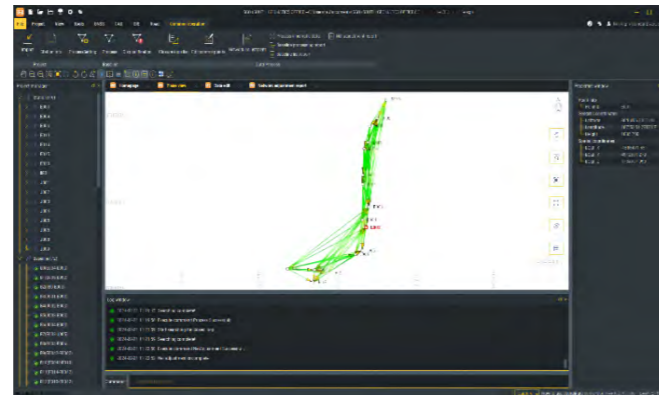
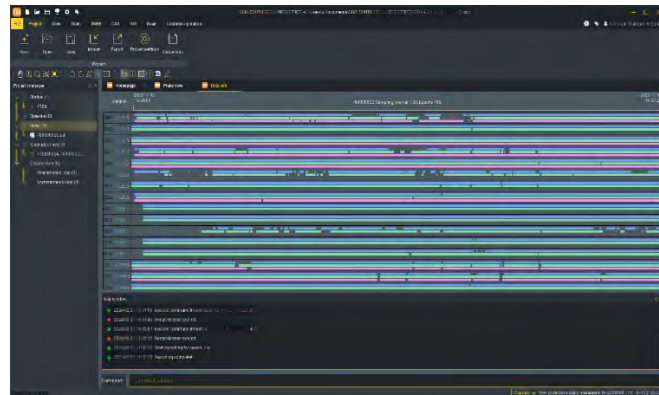
### Innovations for Better User Experience

- RTK Data Backup
- QR Code Share
- Multiple Basemap Support
- Basemap
- Adjustment
- Network Mount Point Sorting
- NMEA Output Setting

*The App Now works with GNSS, Total Station, Echo Sounder, GIS Tablet, in future it will work with SLAM Scanner, Terrestrial Lidar Scanner.*

# KOLIDA Geo Office (KGO)

Ideal GNSS Data Processor, Help You To Keep Advancing



## Data Processing & Reporting

When surveyors need to do post-processing of GNSS data, our software always can provide state-of-the-art technology to help you to produce optimal results. User just need to import field data, the software will automatically process GNSS baselines. Once results come out, the software can generate reports.

## High Accuracy Guaranteed

RTK check, the unique function in our software, can compare RTK and PPK results to automatically acquire the most accurate coordinates for each target point.

It fills up the gap of poor corrections in RTK or hindered observations in PPK.

This improvement is to provide guarantee for your every survey.

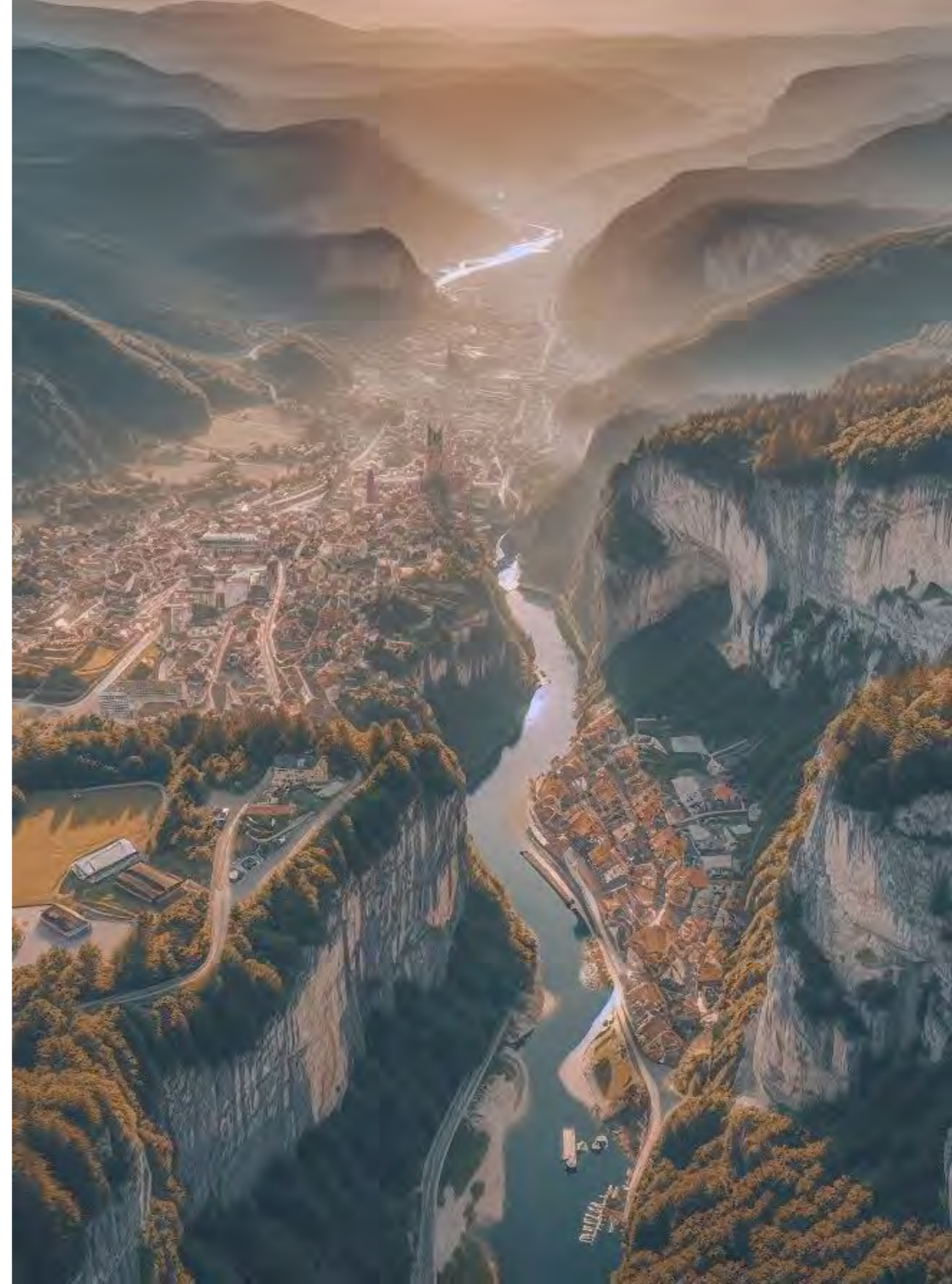
## RINEX Import and Export

This feature enables users to import the third party GNSS receiver data into our software and post-process it, by using the industry standard RINEX format.

## 3D Modelling

User can import photogrammetry image data into the software, to achieve 3D modeling, visually presenting geographic information data such as coordinates, areas, and volumes.

Model data can be transformed into different formats and applied with various coordinate parameters based on actual needs, making it adaptable to a wider range of application scenarios.



## ESPECIFICACIONES

Características GNSS	
Canales	1698
GPS	L1C, L1C/A, L2C, L2P(Y), L5
GLONASS	G1, G2, G3
BDS	B1I, B2I, B3I, B1C, B2a, B2b
GALILEO	E1, E5a, E5b, E6, AltBOC*
SBAS	L1*
IRNSS	L5*
QZSS	L1, L2C, L5*
Banda L del MSS*	Reservado
Tiempo de Posicionamiento	1 Hz ~ 20 Hz
Tasa de inicialización	< 10s
Fiabilidad de inicialización	>99,99%
Precisión de posicionamiento	
Diferencial con códigos	Horizontal: 0,25 m + 1 ppm RMS Posicionamiento Vertical: 0,50 m + 1 ppm RMS
GNSS estático	Horizontal: 2,5 mm + 0,5 ppm RMS Vertical: 3,5 mm + 0,5 ppm RMS
Estático (Larga observación)	Horizontal: 2,5 mm + 0,1 ppm RMS Vertical: 3 mm + 0,4 ppm RMS
Estático rápido	Horizontal: 2,5 mm + 0,5 ppm RMS Vertical: 5 mm + 0,5 ppm RMS
PPK	Horizontal: 3 mm + 1 ppm RMS Vertical: 5 mm + 1 ppm RMS
Transmisión de radio UHF (RTK)	Horizontal: 8 mm + 1 ppm RMS Vertical: 15 mm + 1 ppm RMS
RTK (N-TRIP)	Horizontal: 8 mm + 0,5 ppm RMS Vertical: 15 mm + 0,5 ppm RMS
Posicionamiento SBAS	Típicamente <5m 3DRMS
Tiempo de inicialización de RTK	2-8 s
Ángulo de inclinación de IMU	0°-60°
Rendimiento del hardware	
Dimensión	130 mm (ancho) × 130 mm (largo) × 80 mm (alto)
Peso	790g (batería incluida)
Material	Carcasa de aleación de aluminio y magnesio.
Temperatura de operación	-45°C~+75°C
Temperatura de almacenamiento	-55°C~+85°C
Humedad	100% sin condensación
Resistente al agua y al polvo	Estándar IP68, protección para inmersiones prolongadas a una profundidad de 2 m estándar
Choque/Vibración	IP68, totalmente protegido contra polvo transportado por el viento Cemento molido de forma natural 6-28 V CC, protección contra sobretensión
Fuente de alimentación	
Batería	Batería de iones de litio recargable de 6800 mAh incorporada
Duración de la batería	25 h (modo móvil)
Comunicaciones	
Puerto de E/S	Interfaz LEMO de 5 PINES (puerto de alimentación externo + RS232) Interfaz tipo C (carga + OTG + Ethernet) Interfaz de antena UHF
UHF interna	Receptor y transmisor de radio

Rango de Frecuencia	410-470 MHz
Protocolo de Comunicación	Farlink, Trimtalk, SOUTH
Rango de Comunicación	Normalmente 5 km con protocolo Farlink, hasta 12 km
Bluetooth	Estándar Bluetooth 3.0/4.1, Bluetooth 2.1 + EDR
Comunicación NFC	Soportado
Módem	802.11 b/g/n
Almacenamiento/Transmisión de datos	
Almacenamiento	Almacenamiento interno SSD de 4 GB Admite almacenamiento USB externo (OTG) El intervalo de muestra personalizable ha terminado hasta 20 Hz
Datos Transmisión	Modo plug and play de datos USB transmisión Admite descarga de datos FTP/HTTP. Formato de datos estáticos: STH, Rinex2.01, Rinex3.02 y etc. Formato de datos diferenciales: RTCM 2.1, RTCM 2.3, RTCM 3.0, RTCM 3.1, RTCM3.2 Formato de datos de salida GPS: NMEA 0183, coordenada del plano PJK, código binario Soporte de modelos de red: VRS, FKP, MAC, compatible totalmente con el protocolo NTRIP
Formato de datos	

Sensores	
Unidad de medida (IMU)	Módulo IMU incorporado, sin calibración, 60°
Burbuja electrónica	El software del controlador puede mostrar la burbuja electrónica, chequeo del estado de nivelación del bastón en tiempo real
Termómetro	Sensor de termómetro incorporado, que adopta Tecnología de control de temperatura inteligente, que monitorea y ajusta la temperatura del receptor.
Interacción del usuario	
Operante	Linux
Sistema	
Botón	Botón único
Indicadores	Indicadores de Bluetooth, satélites, datos, carga y energía Con acceso a la interfaz web a través de WiFi o USB Conexión, los usuarios pueden monitorear el estado del receptor y cambiar las configuraciones
Interfaz web	chino/inglés/coreano/español/Portugués/Ruso/Turco/Francés/Italiano
Guía de voz	
Secundario Desarrollo	Proporciona desarrollo secundario paquete y abre el formato de datos de observación de OpenSIC y la definición de la interfaz de interacción
Servicio en la nube	La potente plataforma en la nube proporciona servicios en línea como gestión remota, actualizaciones de firmware, registros en línea, etc.

\*Reserva para futura actualización.  
Observaciones: La precisión de la medición y el rango de operación pueden variar debido a condiciones atmosféricas, trayectoria múltiple de la señal, obstrucciones, tiempo de observación, Temperatura, geometría de la señal y número de satélites rastreados. Especificaciones Sujeto a cambios sin previo aviso.

**KOLIDA**  
La elección del profesional



\* **Chip GNSS S805**  
1698 canales

\* **La IMU de quinta generación**  
Disponible en todo momento

\* **Radio Farlink 2.0**  
Bloqueo de base + indicación de movimiento

\* **Algoritmo de motor dual**  
Capacidad de posicionamiento mejorada

\* **Diseño compacto**  
0,79 kg, 13 cm 8cm

\* **Resistencia extendida**  
Hasta 15 horas de trabajo RTK

**K9**

**KOLIDA**  
La elección del profesional

Compañía de instrumentos de Guangdong Kolidia, Ltd.

Dirección: 7/F, South Geo-information Industrial Park, No.39 Si Cheng Road, Tian He IBD, Guangzhou 510663, China Teléfono: +86-20-22139033  
Fax: +86-20-22139032

Correo electrónico: [export@kolidainstrument.com](mailto:export@kolidainstrument.com) [market@kolidainstrument.com](mailto:market@kolidainstrument.com) <http://www.kolidainstrument.com>

# K9 con S805

## La fusión de utilidad&estabilidad superior

KOLIDA siempre se dedica a brindar comodidad a los topógrafos a través de innovaciones. Tras años de investigación y desarrollo de algoritmos de posicionamiento multisatélite , desarrollamos el motor GNSS S805.

El S805 con 1698 canales puede rastrear más satélites al mismo tiempo y captar señales débiles bajo la vegetación, lo que mejora la tasa de éxito y la velocidad para obtener una solución fija. Es posible localizar lugares donde antes no era posible hacerlo bajo un bosque denso o rodeado de edificios. Ahora, con los K9, no es necesario esperar minutos, sino segundos en el campo para localizarlo de verdad.

## Nuevo algoritmo de posicionamiento

La exploración y la mejora nunca terminará

Tras años de exploración de la tecnología de topografía, KOLIDA ha recopilado una gran cantidad de experiencia y recursos para mejorar su propio algoritmo de posicionamiento GNSS exclusivo. Gracias a la placa base S805 recientemente desarrollada, K9s utiliza algoritmos de doble motor para garantizar una precisión más confiable y una mayor eficiencia de trabajo en entornos hostiles.



## Mitigación del efecto de trayectoria múltiple

Mejorar la precisión en escenarios especiales

El efecto multipath es un factor conocido que reduce la precisión del receptor GNSS. Los K9 con S805 pueden separar la señal directa de la reflejada, lo que garantiza un resultado preciso cuando se miden puntos de destino cerca de edificios o zonas de agua.



## Compensación ionosférica

Ser capaz en cualquier lugar y en cualquier momento

Los K9 pueden compensar el error por el retraso ionosférico. Independientemente de si se trabaja en un lugar donde la ionosfera está activa o se realiza un posicionamiento RTK de red a larga distancia (10-40 km), puede ayudarlo a obtener un resultado más preciso.



# K9, ¡sigue brillando!

## 4 Mejoras importantes Para simplificar y agilizar su trabajo de campo

El equipo de desarrolladores de KOLIDA comprende los desafíos que enfrentan los topógrafos en sus tareas diarias, por eso estamos orgullosos de presentar nuestra última oferta, K9s.

Diseñado con meticulosa atención a los detalles, K9s prioriza las necesidades de los topógrafos, con el objetivo de agilizar su flujo de trabajo y mejorar su productividad.

Se han incorporado cuatro características indispensables a los K9: unidad de medición inercial (IMU), radio e incluso su tamaño; cada elemento está diseñado para aliviar las cargas que suelen encontrarse en el campo, lo que garantiza que los topógrafos puedan realizar sus tareas con mayor facilidad y eficiencia.

¡Te deseamos una nueva experiencia en el trabajo!

### La nueva IMU de quinta generación

Utilizable casi todo el tiempo

En el pasado, los topógrafos giraban el poste al cambiar la dirección de desplazamiento o ajustar la posición del receptor, lo que a veces desactivaba la IMU. Ahora, la IMU de quinta generación elimina la pérdida del estado de la IMU en la mayoría de los casos para mejorar la disponibilidad y la productividad de la IMU. La función sin calibración ahorra el tiempo de inicializar manualmente la IMU cada vez.



### Radio Farlink 2.0

Mayor transmisión, menor limitación

Después de años de actualizaciones de hardware y firmware, Farlink 2.0 puede procesar datos de mayor tamaño y brindar una transmisión más estable. Puede recibir datos de una base específica mediante la función de bloqueo de base. Aunque haya varias bases que transmitan con la misma frecuencia, su rover recibirá datos de la base correcta. Cada radio se sometió a pruebas extremas de cambio de temperatura de 20 °C a 60 °C para garantizar su robustez.



### Compacto y cómodo

Ligereza con robustez

K9s representa un receptor GNSS ultraligero que supera a sus competidores. Con un peso de tan solo 0,8 kg, incluida la batería, resulta entre un 40 % y un 50 % más ligero que los receptores GNSS convencionales. Esta construcción ligera alivia la fatiga de los topógrafos y mejora su maniobrabilidad, lo que lo hace especialmente ventajoso para operaciones en entornos exigentes.



### Horario de trabajo extendido

Ligereza con robustez

Gracias a la batería de alta capacidad y al plan de gestión de energía inteligente, K9s puede funcionar hasta 12 horas en modo de radio móvil RTK y hasta 15 horas en modo estático. El puerto de carga es USB tipo C, los usuarios pueden elegir el cargador rápido RUIDE o su propio cargador de teléfono inteligente o banco de energía para recargar.

